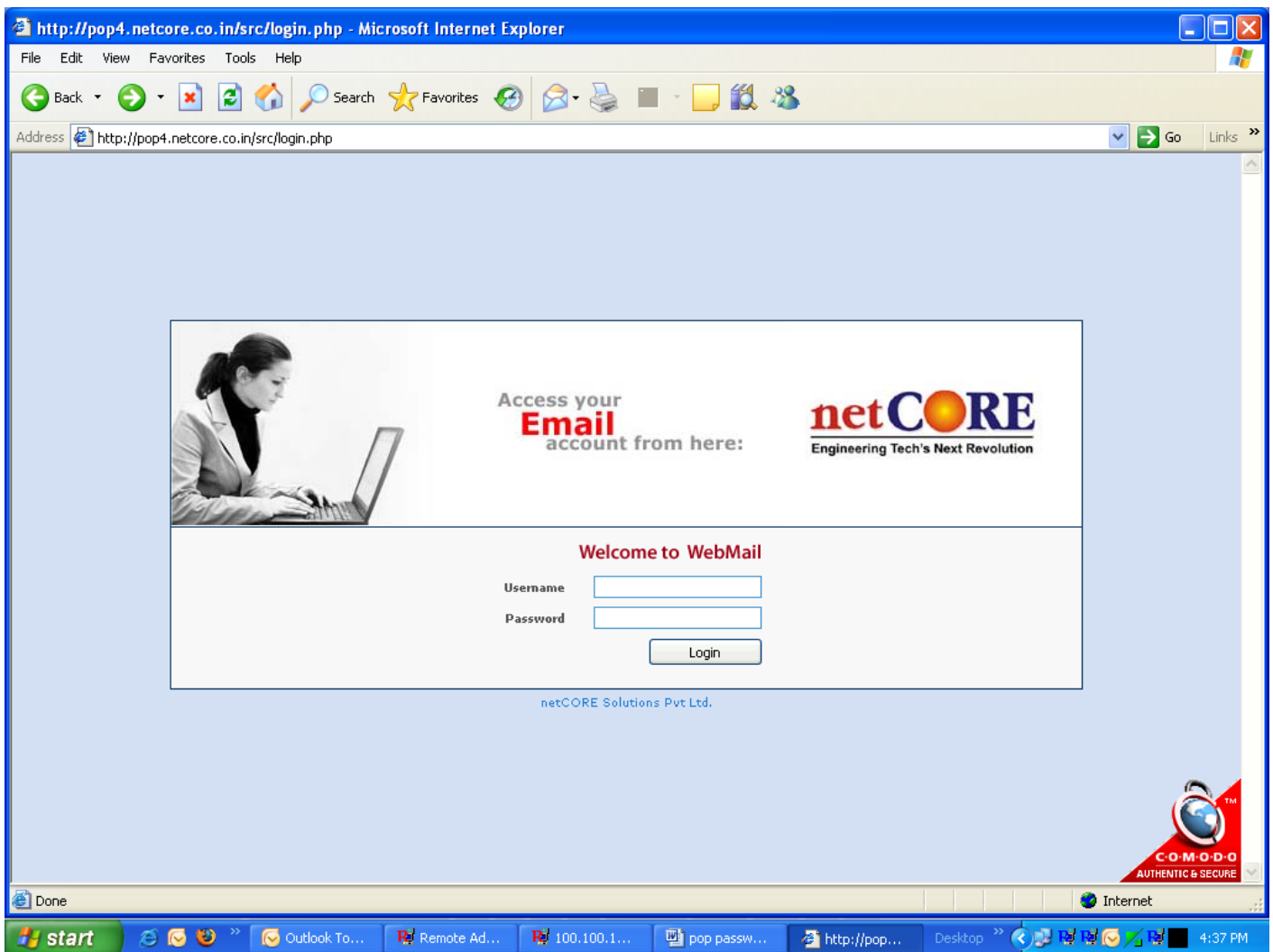


(1) Open Website:

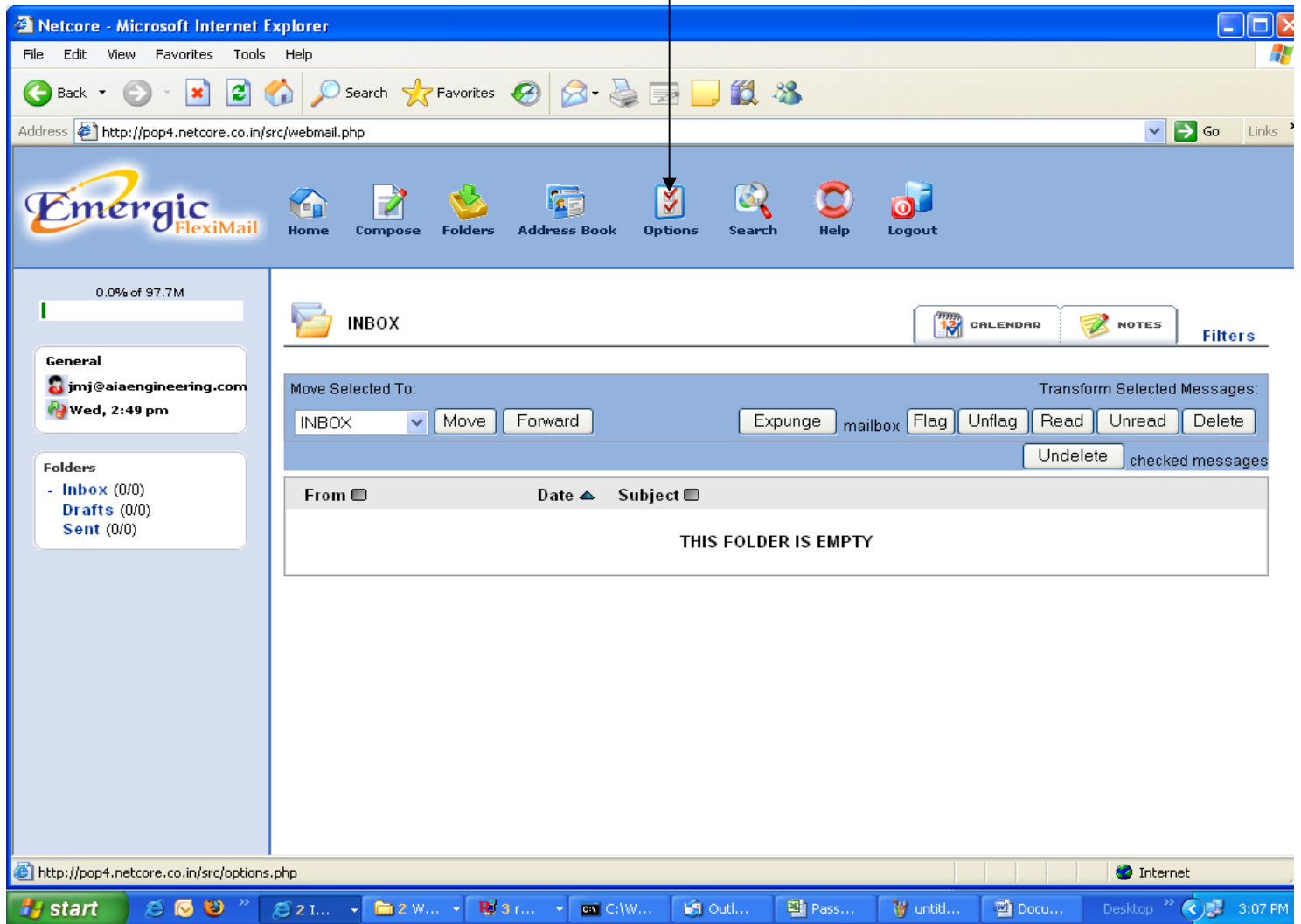
<http://pop4.netcore.co.in>



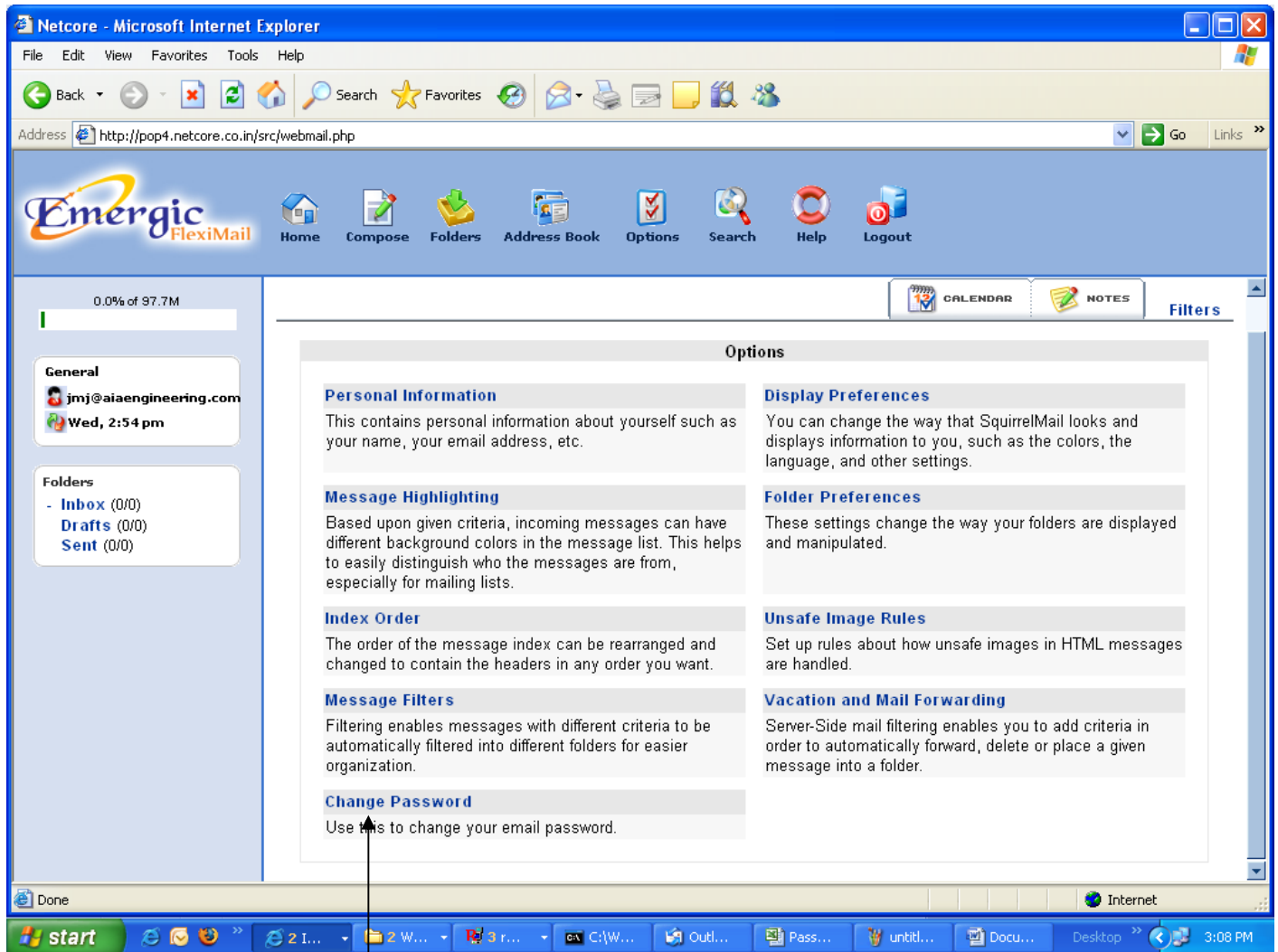
(2) Login your **Username** & **Password**

(3) Click on **Option** Button

Click on Option Button



(4) Click on **Change Password**



Click On **Change Password**

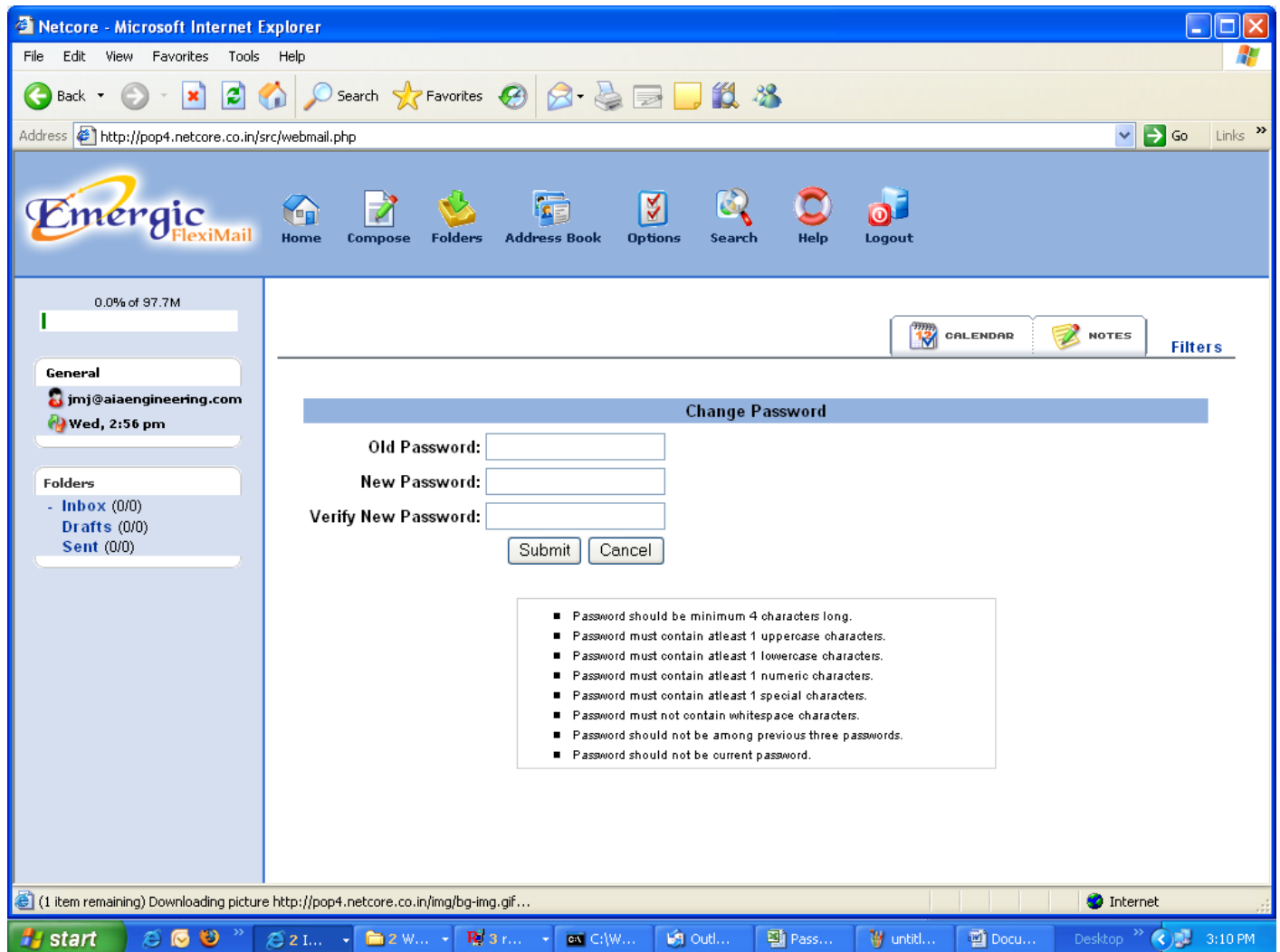
(5) Enter **Old Password**

- Password should be minimum 4 characters long.
- Password must contain at least 1 uppercase character.
- Password must contain at least 1 lowercase character.
- Password must contain at least 1 numeric character.
- Password must contain at least 1 special character.
- Password must not contain with space characters.
- Password should not be among previous three passwords.
- Password should not be current password.

Ex: A@b1

(6) Enter **New Password**

(7) Enter **Verify New Password**



(8) Click On **Submit** Botton.

**(9) After you change your webmail Password, please apply same password in your MS Outlook or Outlook Express.**